

Behold the Bridegroom

Kieven Chant
Valaam Monastery



Be - hold, the Bride-groom com - eth at mid - - - night,



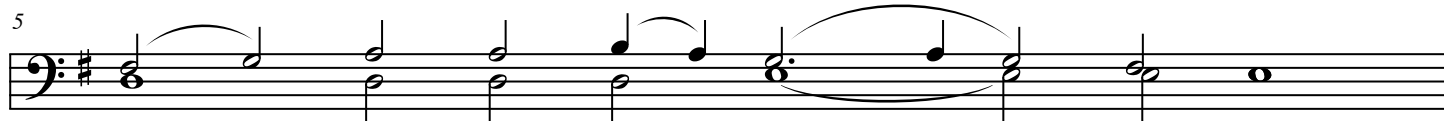
and bles - sed is that ser - vant whom He shall find watch - - - ing,



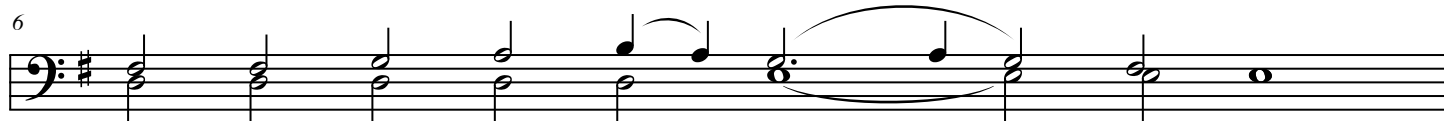
but un - wor - thy is the ser - vant whom He shall find heed - - - less.



Be - ware, there - fore, O my soul,



do not be weighed down by sleep;



lest thou be giv - en up to death,

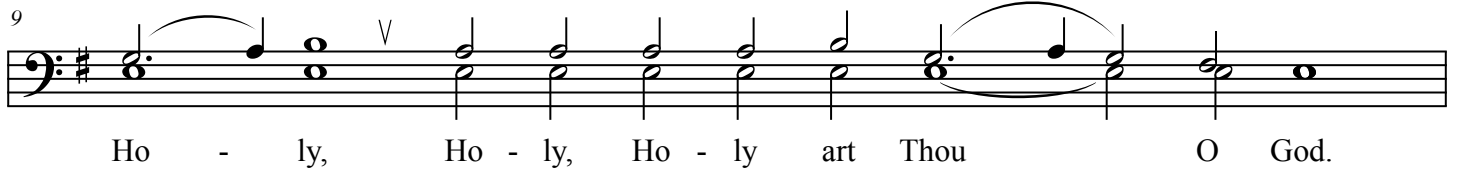


and lest thou be shut out from the king - - - dom.



But rouse thy - self cry - - - - - ing:

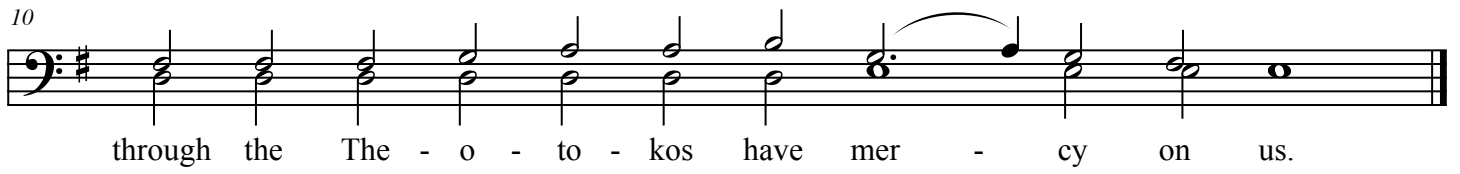
9



Ho - ly, Ho - ly, Ho - ly art Thou O God.

Detailed description: This block contains the first line of musical notation, measures 9 and 10. It is written in bass clef with a key signature of one sharp (F#). Measure 9 starts with a dotted quarter note G2, followed by a quarter note A2, and a dotted quarter note B2. A slur covers these three notes. A fermata is placed over the B2 note. The accompaniment consists of a series of chords: G2-B2, G2-A2, G2-A2-B2, G2-A2-B2, G2-A2-B2, and G2-A2-B2. Measure 10 begins with a dotted quarter note G2, followed by a quarter note A2, and a dotted quarter note B2. A slur covers these three notes. The accompaniment continues with chords: G2-B2, G2-A2, G2-A2-B2, G2-A2-B2, and G2-A2-B2. The piece ends with a double bar line.

10



through the The - o - to - kos have mer - cy on us.

Detailed description: This block contains the second line of musical notation, measures 11 and 12. It is written in bass clef with a key signature of one sharp (F#). Measure 11 starts with a dotted quarter note G2, followed by a quarter note A2, and a dotted quarter note B2. A slur covers these three notes. The accompaniment consists of a series of chords: G2-B2, G2-A2, G2-A2-B2, G2-A2-B2, G2-A2-B2, and G2-A2-B2. Measure 12 begins with a dotted quarter note G2, followed by a quarter note A2, and a dotted quarter note B2. A slur covers these three notes. The accompaniment continues with chords: G2-B2, G2-A2, G2-A2-B2, G2-A2-B2, and G2-A2-B2. The piece ends with a double bar line.