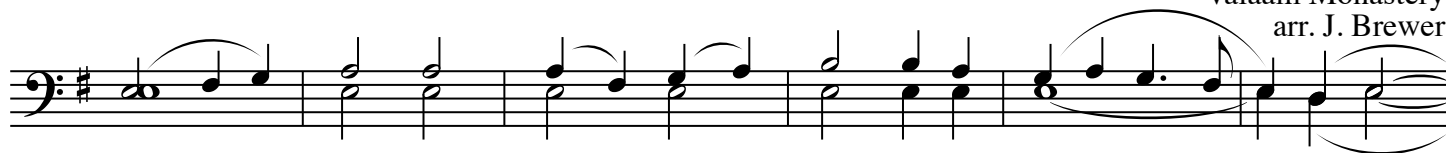
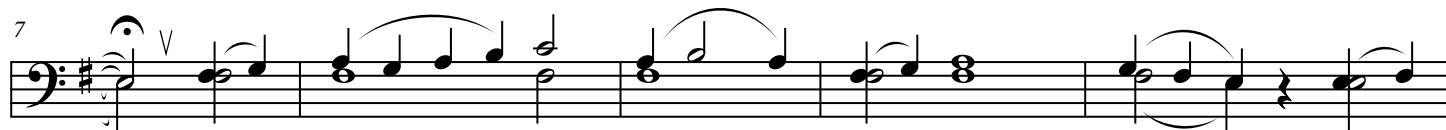


Behold the Bridegroom

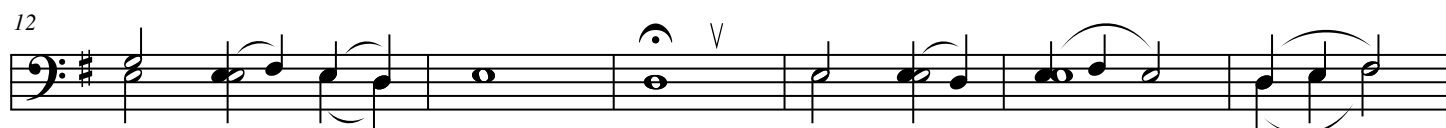
Znamenny Chant
Valaam Monastery
arr. J. Brewer



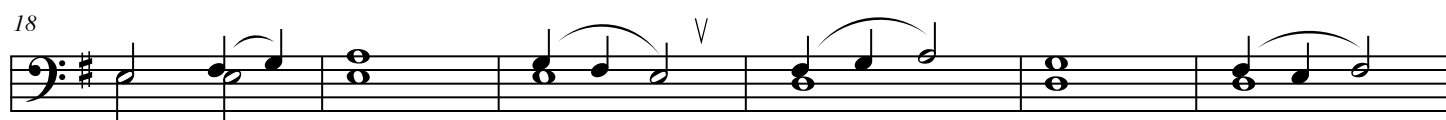
Be - hold, the Bride - groom com - eth at mid - - - night



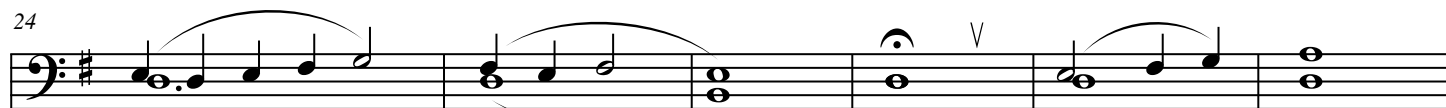
and bles - sed is that ser - vant whom



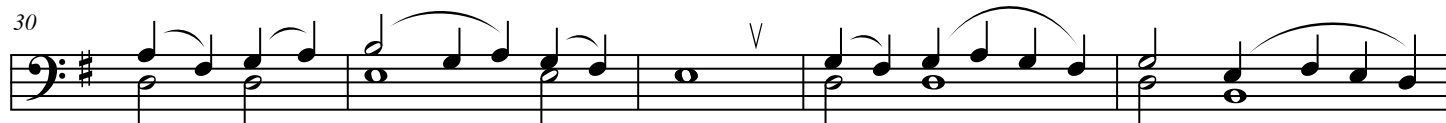
He shall find watch - ing, but un - wor - - - thy



is the ser - vant whom He shall



find heed - - - less. Be - - - ware,



there - fore, O my soul, do not be weighed



down by sleep; lest thou be giv - en up to



death, and lest thou be shut out

47

from the king - dom. But rouse thy - self cry - ing:

Detailed description: This musical staff covers measures 47 to 53. It begins with a treble clef and a key signature of one sharp (F#). The melody is written in a soprano voice. Measure 47 starts with a half note G4, followed by quarter notes A4 and B4. Measure 48 has a half note C5 with a fermata. Measure 49 has a half note D5 with a fermata. Measure 50 has a half note E5 with a fermata. Measure 51 has a half note F#5 with a fermata. Measure 52 has a half note G5 with a fermata. Measure 53 has a half note A5 with a fermata. There are dynamic markings 'V' above measures 49 and 53.

54

Ho - ly, Ho - ly, Ho - ly art Thou O God.

Detailed description: This musical staff covers measures 54 to 59. It continues with the same treble clef and key signature. Measure 54 has a half note G4 with a fermata. Measure 55 has a half note A4 with a fermata. Measure 56 has a half note B4 with a fermata. Measure 57 has a half note C5 with a fermata. Measure 58 has a half note D5 with a fermata. Measure 59 has a half note E5 with a fermata. There are dynamic markings 'V' above measures 54 and 59.

60

through the The - - - o - to - - - - -

Detailed description: This musical staff covers measures 60 to 65. It continues with the same treble clef and key signature. Measure 60 has a half note F#4 with a fermata. Measure 61 has a half note G4 with a fermata. Measure 62 has a half note A4 with a fermata. Measure 63 has a half note B4 with a fermata. Measure 64 has a half note C5 with a fermata. Measure 65 has a half note D5 with a fermata. There are dynamic markings 'V' above measures 60 and 65.

66

kos

Detailed description: This musical staff covers measures 66 to 72. It continues with the same treble clef and key signature. Measure 66 has a half note E5 with a fermata. Measure 67 has a half note F#5 with a fermata. Measure 68 has a half note G5 with a fermata. Measure 69 has a half note A5 with a fermata. Measure 70 has a half note B5 with a fermata. Measure 71 has a half note C6 with a fermata. Measure 72 has a half note D6 with a fermata. There are dynamic markings 'V' above measures 66 and 72.

73

have mer - - - - - cy on us.

Detailed description: This musical staff covers measures 73 to 78. It continues with the same treble clef and key signature. Measure 73 has a half note E5 with a fermata. Measure 74 has a half note F#5 with a fermata. Measure 75 has a half note G5 with a fermata. Measure 76 has a half note A5 with a fermata. Measure 77 has a half note B5 with a fermata. Measure 78 has a half note C6 with a fermata. There are dynamic markings 'V' above measures 73 and 78.